

# Technical Data Sheet

## Platinum Blue, an EM Stain

#22407

### Description

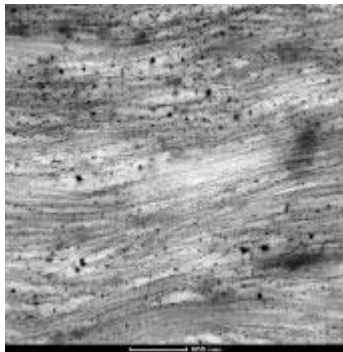
IBI Blue Platinum Stain  $\text{Pt}_4\text{N}_8\text{H}_6\text{O}_{24}\text{C}_{20}$

### Preparation

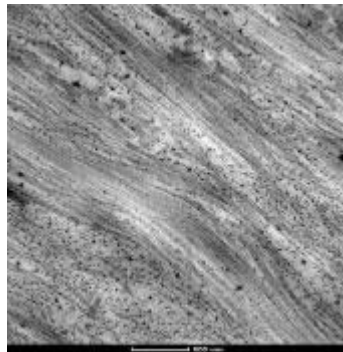
- Adjust pH of distilled water with concentrated acetic acid to 3.5
- Dilute PtBlue stock solution as supplied 1:100 in pH-adjusted water

### Use

- Incubate grid/Epon section on a drop of PtBlue 1:100 for 5 min at RT
- Wash on a water drop for about 2 min, repeat 5x
- Dry grid/section for approx. 10 min in an incubator
- Stain with lead citrate for 2 min at RT
- Jet-wash grid 5x (water stream from a plastic pastette)
- Suck up remaining water with a filter paper and dry thoroughly



*Cartilage ECM, contrasted with PtBlue + LC*



*Cartilage ECM, contrasted with UA + LC*



*HepG2 cells, contrasted with PtBlue + LC*

Depending on the sample, PtBlue can be nearly as good as uranyl acetate in its ability to add contrast. It does not work well with chondrocytes or *T. brucei* in our hands.

### Credits

Schmidt, Katy. "Technical Note." *IBI Labs*. Web. 15 May 2015.